

How can we do environmentally sustainable healthcare?

Caitríona Callan, Tom Hardie, Charly Coxon and
Ayoma Ratnappuli

February 2024

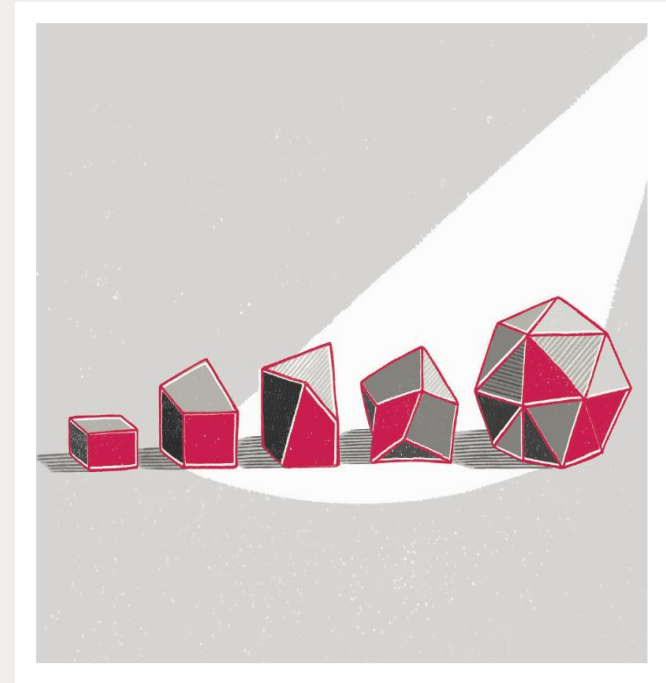
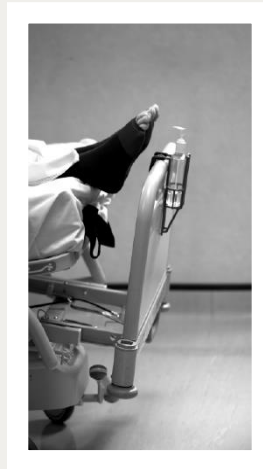


Contents

1. Sustainability at the Health Foundation
2. What is net zero care?
3. SusQI and net zero
4. Future areas of focus
5. Discussion

About us

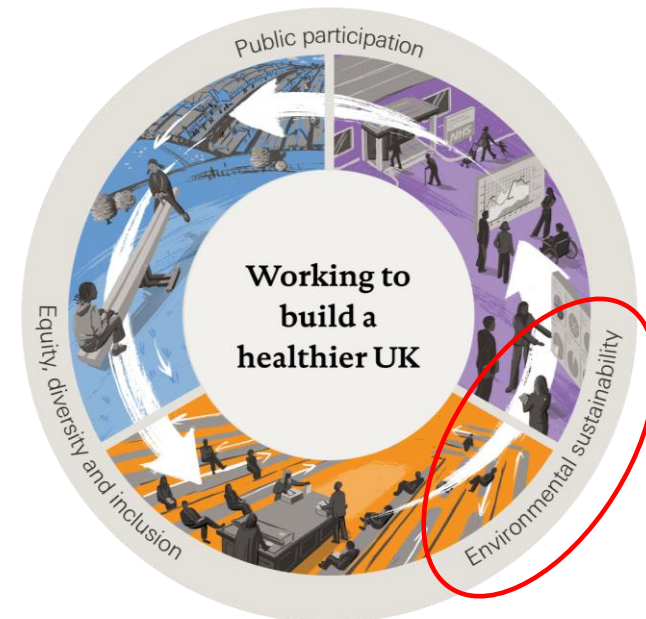
The Health Foundation is an independent charity committed to bringing about better health and health care for people in the UK.



We shine a light on
how to make successful
change happen

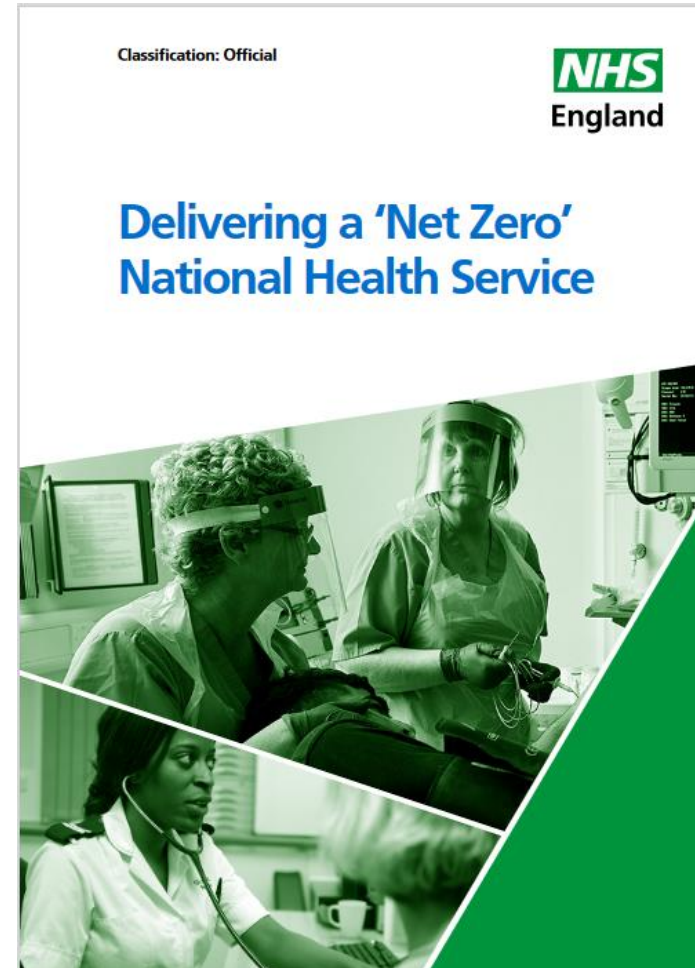
Health Foundation work on sustainability

Our strategy for 2023-2025



Net zero in health and care

- NHS in England the first national health system to commit to net zero:
 - 2040 target for directly controlled emissions, 80% reduction by 2028 to 2032
 - 2045 for emissions it influences, 80% reduction by 2036 to 2039
- First health system to embed net zero into legislation with Health and Care Act 2022



What is net zero care?

Framework of low-carbon care

- We adapted the Centre for Sustainable Healthcare's principles of sustainable clinical practice to outline a framework of low-carbon care:
 - Preventing disease
 - Improving the management of disease and health
 - Moving care out of hospitals
 - Eliminating avoidable waste and unnecessary interventions
 - Using lower-carbon alternatives

Framework of low-carbon care

- We adapted the Centre for Sustainable Healthcare's principles of sustainable clinical practice to outline a framework of low-carbon care:
 - Preventing disease
 - Improving the management of disease and health
 - Moving care out of hospitals
 - Eliminating avoidable waste and unnecessary interventions
 - Using lower-carbon alternatives

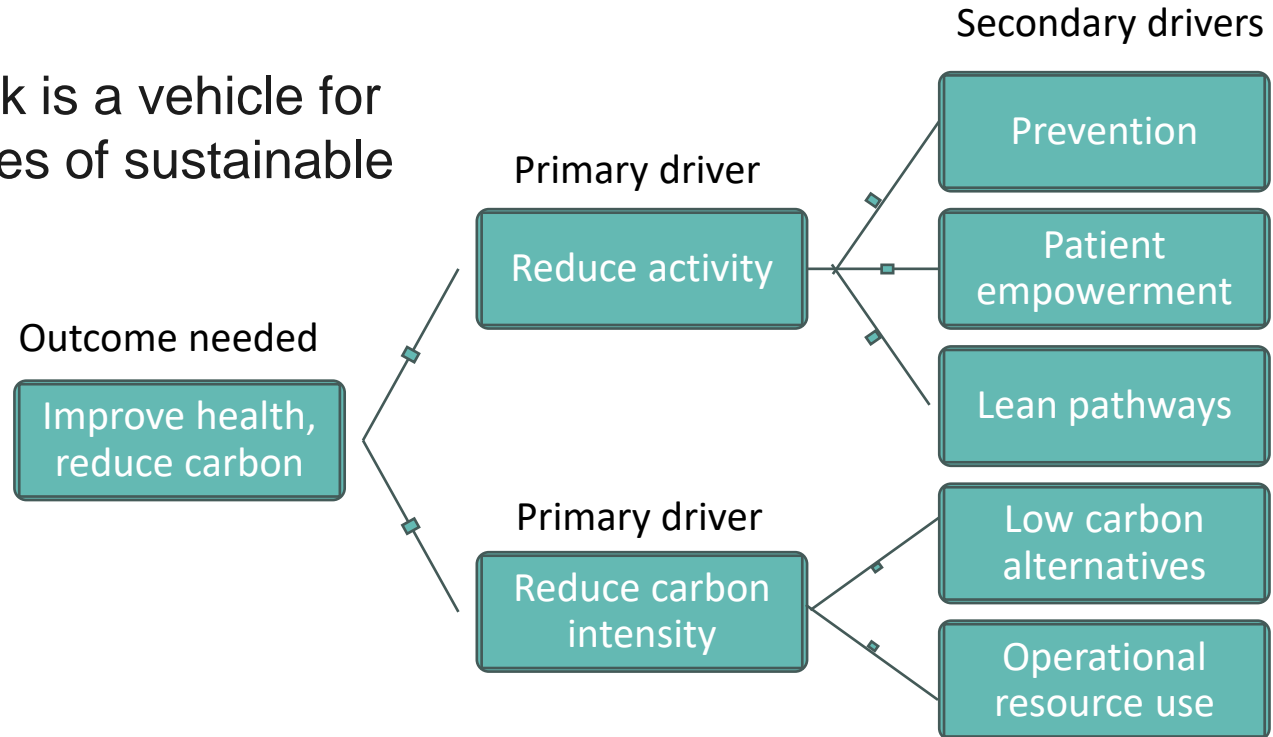
SusQI in practice



SusQI at the Centre for Sustainable Healthcare



- SusQI Framework is a vehicle for actioning principles of sustainable healthcare





SusQI Framework



$$\text{Sustainable Value} = \frac{\text{Outcomes for Patients} + \text{Outcomes for the Population}}{\text{Environmental Impact} + \text{Social Impact} + \text{Financial Impact}}$$

The equation uses icons: a red heart for Outcomes for Patients, a purple person for Outcomes for the Population, a green tree for Environmental Impact, a purple person for Social Impact, and a yellow stack of coins for Financial Impact.

Aims to improve sustainable value, by:

- Understanding environmental, social and financial impacts of the current system
- Using the principles of sustainable clinical practice to design improvements
- Measuring the impact on sustainable value.

SusQI in Practice



Home

About

Do a Project

Teach Others

Green Team Competition

SusQI Academy

SusQI Beacon Site

More About
SusQI

Helping you to Use
SusQI

Helping you Teach
SusQI

Join the SusQI
Network

What is
SusQI?

The SusQI
Education
Project

Meet the
Team

Eliminating low value appointments from the patient care pathway



**GREEN TEAM
COMPETITION**
CENTRE FOR SUSTAINABLE HEALTHCARE

The team developed a new 'very stable' HIV patient pathway, reducing consultant review and phlebotomy testing from 6 monthly to annual review. The change is applicable to 90% of the caseload (855 patients).



Clinical

Annual review is a motivator to improve adherence and releases staff time to engage with unstable patients



Environmental

25,958 kgCO2e per year equivalent to driving **74,763 miles**



Financial

£44,905 per year



Social

- Patients - more convenient and less time off work
- Staff – can dedicate time to higher value work, improved job satisfaction



CENTRE for
SUSTAINABLE
HEALTHCARE



Northamptonshire Healthcare
NHS Foundation Trust



Framework of low-carbon care

- We adapted the Centre for Sustainable Healthcare's principles of sustainable clinical practice to outline a framework of low-carbon care:
 - Preventing disease
 - Improving the management of disease and health
 - Moving care out of hospitals
 - Eliminating avoidable waste and unnecessary interventions
 - Using lower-carbon alternatives

Improving the management of disease and health

- Oxford AHSN worked to increase use of Placental Growth Factor blood testing in maternity care across Thames Valley in 2021



Oxford 
Academic Health
Science Network

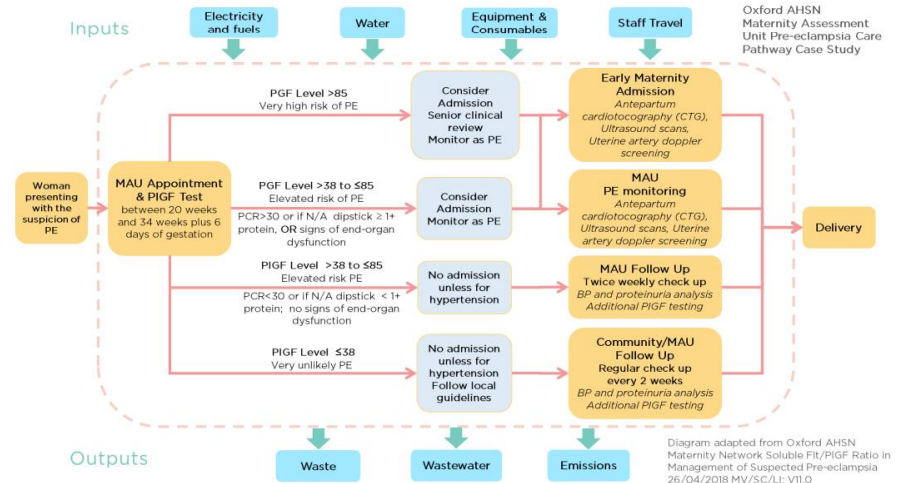


Improving the management of disease and health

- Whole-care-pathway approach critical to realise the gains across the 'triple bottom line' -social, carbon and financial.

○ 1 centre in 1 year saved (est):

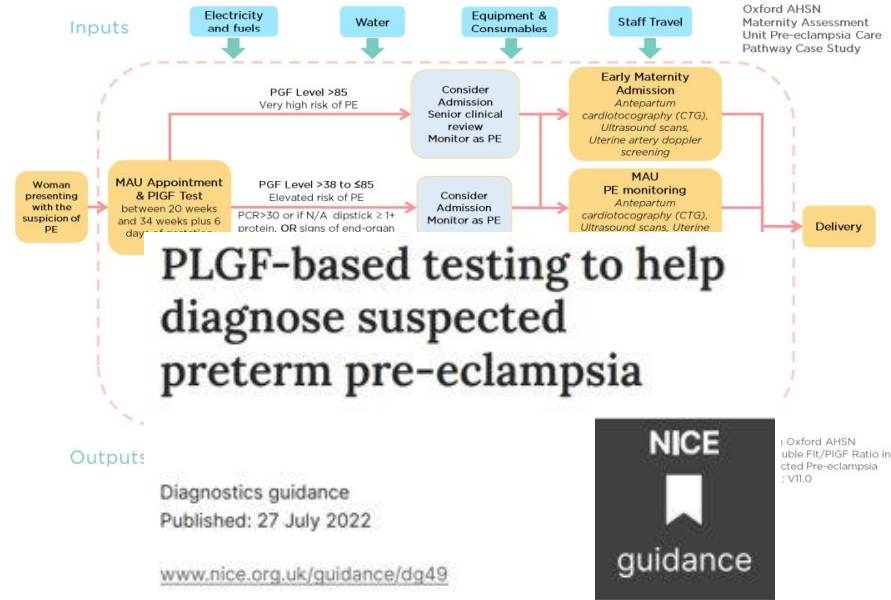
- 386 avoidable admissions
- £250-600 per woman receiving test
- 35t CO₂e and 1.9 t of waste



Improving the management of disease and health

- Whole-care-pathway approach critical to realise the gains across the 'triple bottom line' -social, carbon and financial

- 1 centre in 1 year saved (est):
 - 386 avoidable admissions
 - £250-600 saved per woman receiving test
 - 35t CO₂e and 1.9 t of waste



Using lower-carbon alternatives

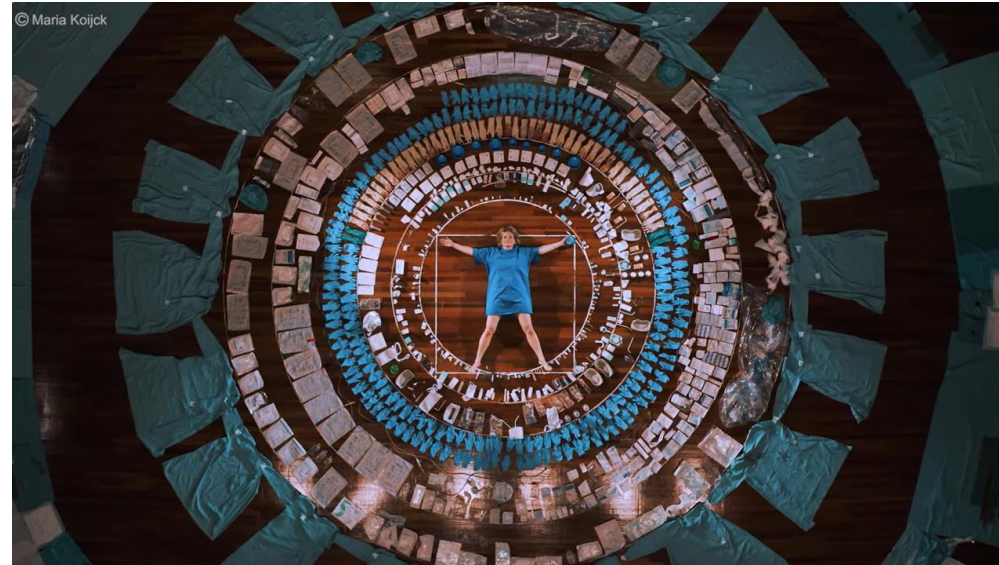
- Partnership of Revolution-ZERO, West of England AHSN won SBRI funding as part of NHS Accelerated Access Collaborative
- Worked with Royal Cornwall Hospitals NHS Trust to switch from single-use surgical gowns and surgical drapes to reusable equivalents



Youtube image via Maria Kojck

Using lower-carbon alternatives

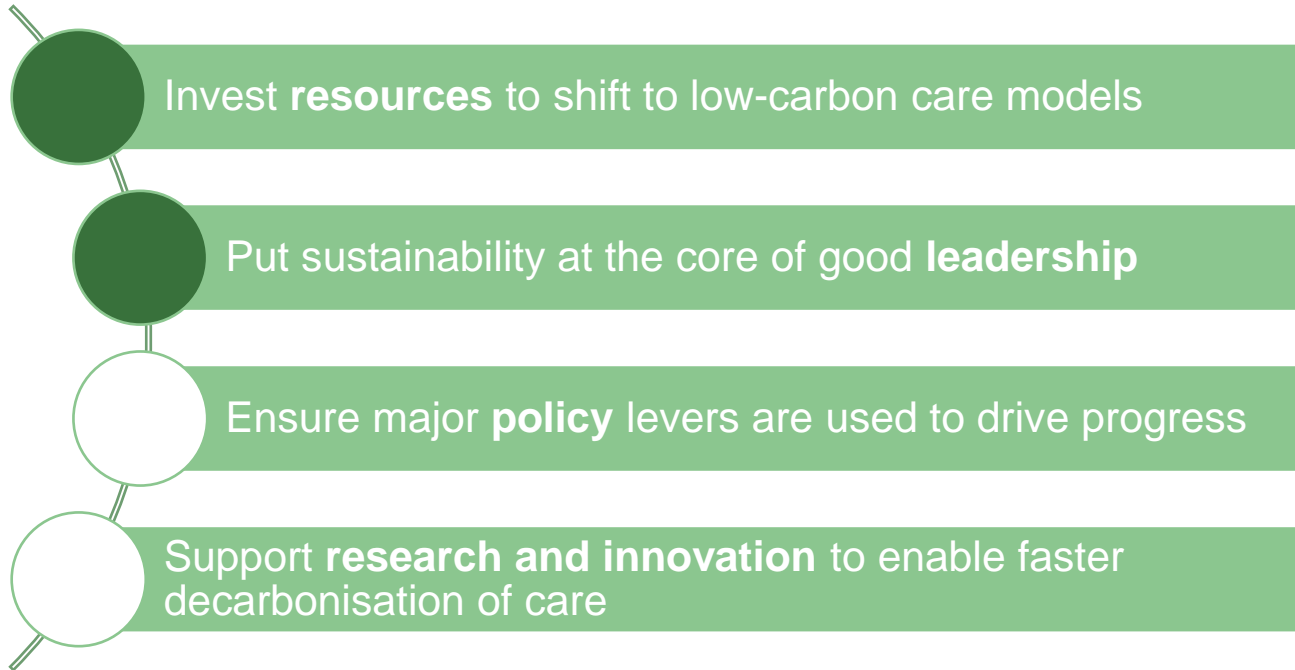
- Also developed and validated low temperature decontamination process
- Estimated savings of 67 tonnes CO₂e per year, and £10,000 at this trust



Youtube image via Maria Kojck

What is needed to transition
to net zero care?

Four areas for action to enable net zero care



Invest resources to shift to low-carbon care models

Capacity

- Reliance on volunteerism insufficient and unsustainable.
- Staff need time, space and resources to focus on sustainability.

Capability

- Awareness, skills and knowledge around low carbon care relatively low.
- Need to integrate sustainability into education and training.
- Integrating into efforts to improve quality of care.



Put sustainability at the core of good leadership

- Competing urgent priorities crowding out sustainability – but net zero can be integrated into strategic decision making.
- Prioritising sustainability, unlocking resources and investing staff time and training in decarbonising care all rest with leaders.
- Support and training should be available to leaders across all levels of health care organisations and ICSs.



Health Foundation work on sustainability

Health Foundation work on sustainability

Research and analysis to inform policy

- Public polling; Net zero long read

Capacity building

- Green surgery report; SusQI; Q community

Frontline change projects

- Asthma toolkit; Scaling up virtual consultations

Improving our own sustainability

- Net zero endowment; Strategy for wider ops

Convening and engaging policymakers

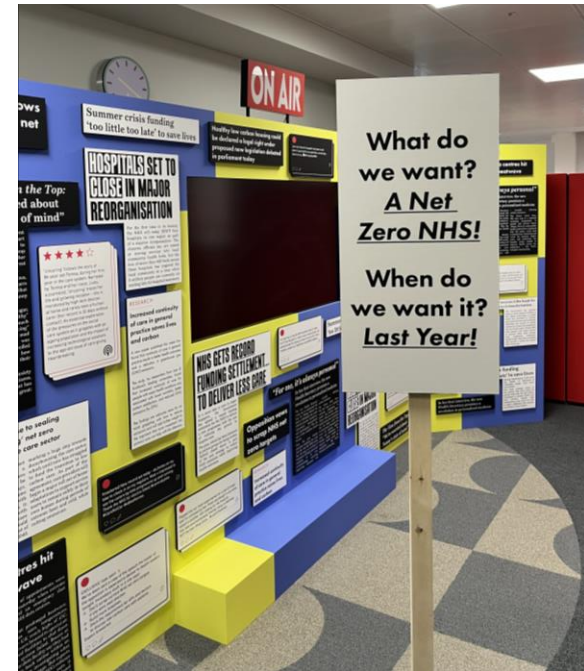
- Net zero NHS immersive installation



Net zero NHS installation

Brought together health care leaders, clinicians and policymakers to:

- Explore interactions between net zero and other long-term priorities for the health system.
- Stimulate changes in the way people think about and act on the net zero goal within their current role.
- Position the Health Foundation as a convener and emerging thought leader on environmental sustainability in health care.



Our planned portfolio on sustainable health care

“The changes that need to occur within health and social care delivery to achieve net zero.”

Objectives

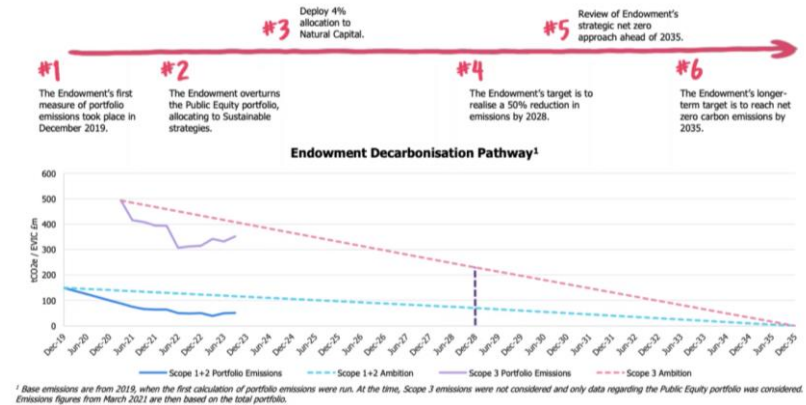
1. Understanding national health policy levers and how they can better support net zero care delivery.
2. Identifying, evaluating and scaling innovation and Improvement.
3. Building capability to implement change.



Internal sustainability work

Decarbonisation of our endowment

- Constant monitoring with the flexibility to adapt reporting and investment approach.
- 50% reduction in emissions by 2028
- Reach net zero carbon emissions by 2035.



Completed a **thorough analysis** of our carbon footprint and developed a **tool** for future measurement.

Published **sustainability guidance** for grant applications.

Creating a **carbon reduction plan**.

Questions/ discussion

- What are you working on relating to sustainability?
- Do any of the topics we've presented here resonate with you?
- What would you like to see in the SIG in 2024?

Thank you

Caitriona.Callan@health.org.uk

Tom.Hardie@health.org.uk

